

PRESTIGIOUS VISIT TO WESTMINSTER ABBEY

SATURDAY OCTOBER 20TH 2018



**PRIVATE EVENING TOUR WHEN THE ABBEY IS QUIET, DIMLY LIT, BUT FILLED WITH MUSIC
PROVIDED BY CHORISTERS OF THE PURCELL CLUB (SEE OVERPAGE)**

- 14.45 Stocklund Square Coach ready for Boarding . Gastonia coaches
- 15.00 Coach departs
- 17.00 Arrive at WESTMINSTER ABBEY A little slack time has been factored in here in case of traffic issues. You may have time to wander in Parliament square to view the statues?
- 17.30 [The Cellarium – Westminster Abbey](#) – Two course meal including wine or soft drink. Please note that it is best to ensure your “comfort stop” is taken here, as toilet facilities in The Abbey later are more difficult.
- 18.45 Assemble for entry through rear entrance of The Abbey Cloisters (near Cellarium) for Purcell tour
- 19.00 Purcell Tour begins
- 21.15 Purcell tour ends
- 21.30 Coach ready for boarding
- 23.00 approximately - Coach arrives at Cranleigh

This visit may seem expensive – but it is very prestigious and takes about 5 years to get a booking! We include a meal as it is the only realistic way of ensuring people can eat in an area which does not have prolific catering facilities – plus we do not want to lose members in the dark!

The visit includes – Transport and driver’s tip, 2 course meal and drink, The Purcell Club’s Tour of the Abbey with music and with limited number of guests

Cost £70 per person

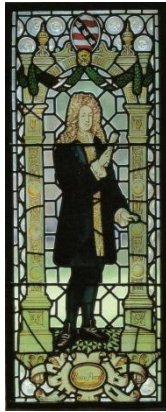
*****You will need to make a meal option a month before the event –
so please respond when you receive an email about this*****

We regret no refunds unless authorized by the Committee*

Should you have a problem, and find you cannot attend this visit despite your booking –

Please contact [Jacqui Camfield 01483 273241](#)

**THE ARTS SOCIETY CRANLEIGH VISIT WESTMINSTER ABBEY
SATURDAY OCTOBER 20TH 2018**



The Purcell Club

Founded 1927. Affiliated to the Westminster Abbey Old Choristers' Association

GENERAL INFORMATION

Introduction

The Purcell Club is named after Henry Purcell, the famous composer, who was organist of Westminster Abbey from 1679-1695. It is a male voice choir formed predominantly from members of the Westminster Abbey Old Choristers' Association, though guest singers join us from time to time. The singers give their services in order to put on these tours and all the profits from ticket sales go to support the Abbey and a range of small charities.

Tour content

Visitors assemble at 6.45pm in the Cloisters for a welcome by a member of the Purcell Club or Abbey clergy. They then move into the Abbey and take seats in the Nave for the commencement of the tour at 7.00pm, when the first piece of sacred music is sung. The speaker describes the history and architecture of the Abbey in some detail, moving from one location of interest to the next, including the Quire, Sacrarium, High Altar, the Cosmati Pavement (unique in this country), St Edward the Confessor's Shrine, Henry VII Chapel and Poets' Corner. At various points there is a pause for members of the Purcell Club to sing suitable musical items ranging from the 16th to 21st centuries. On returning to the Nave for the final part of the tour, a short piece is played by one of the Abbey organists to demonstrate the Abbey's magnificent organ. The tour ends with the choir singing a piece of suitable solemnity, such as 'The Kontakion for the Departed', around the Unknown Warrior's Grave as the lights dim. The evening concludes at approximately 9.15pm.

Mobility Restrictions

Visitors to the Abbey need to be aware in advance that much of the Abbey floor and steps are uneven and that some areas may be dimly lit. There are, indeed, several places on the tour where there are several flights of steps that need to be negotiated. *Please ensure, therefore, that any of your members with restricted mobility are fully aware of this before committing themselves to joining your tour party.* Please feel free to phone and discuss this aspect of the tour in case of need. It should also be noted that, while the main parts of the Abbey are accessible by wheelchair, several of the building's most notable historic features, which form a significant part of this special tour, cannot be viewed other than on foot. Anyone who is confined to a wheelchair should be made aware that they would miss seeing the unique Cosmati Pavement, St Edward the Confessor's Shrine, and various chapels including that of Henry VII with its glorious fan-vaulted roof. [One wheelchair is available, for which prior notice is required, please

Please ensure that your members are made aware that Westminster Abbey does not permit photography, video or sound recording during tours or visits.